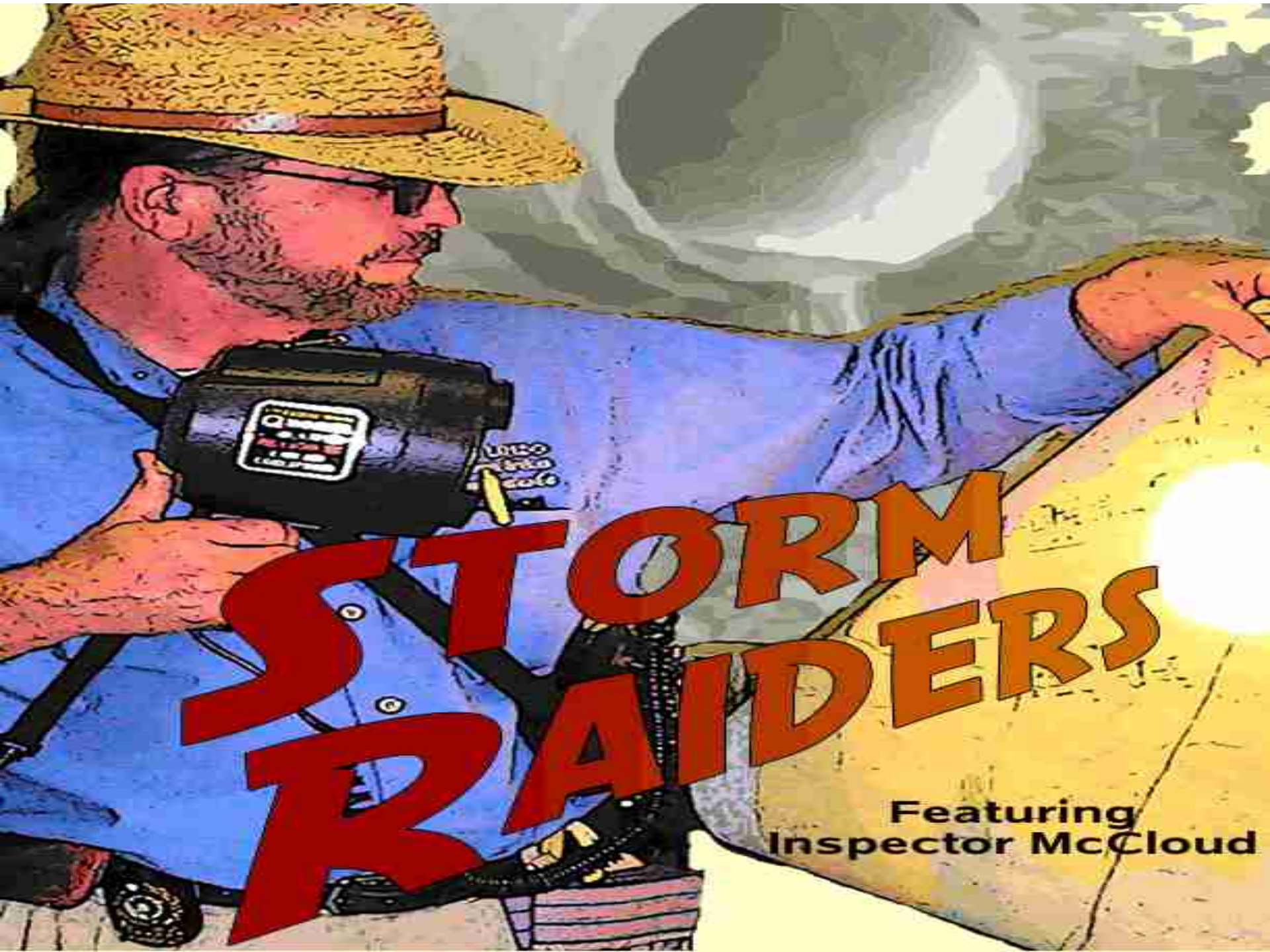


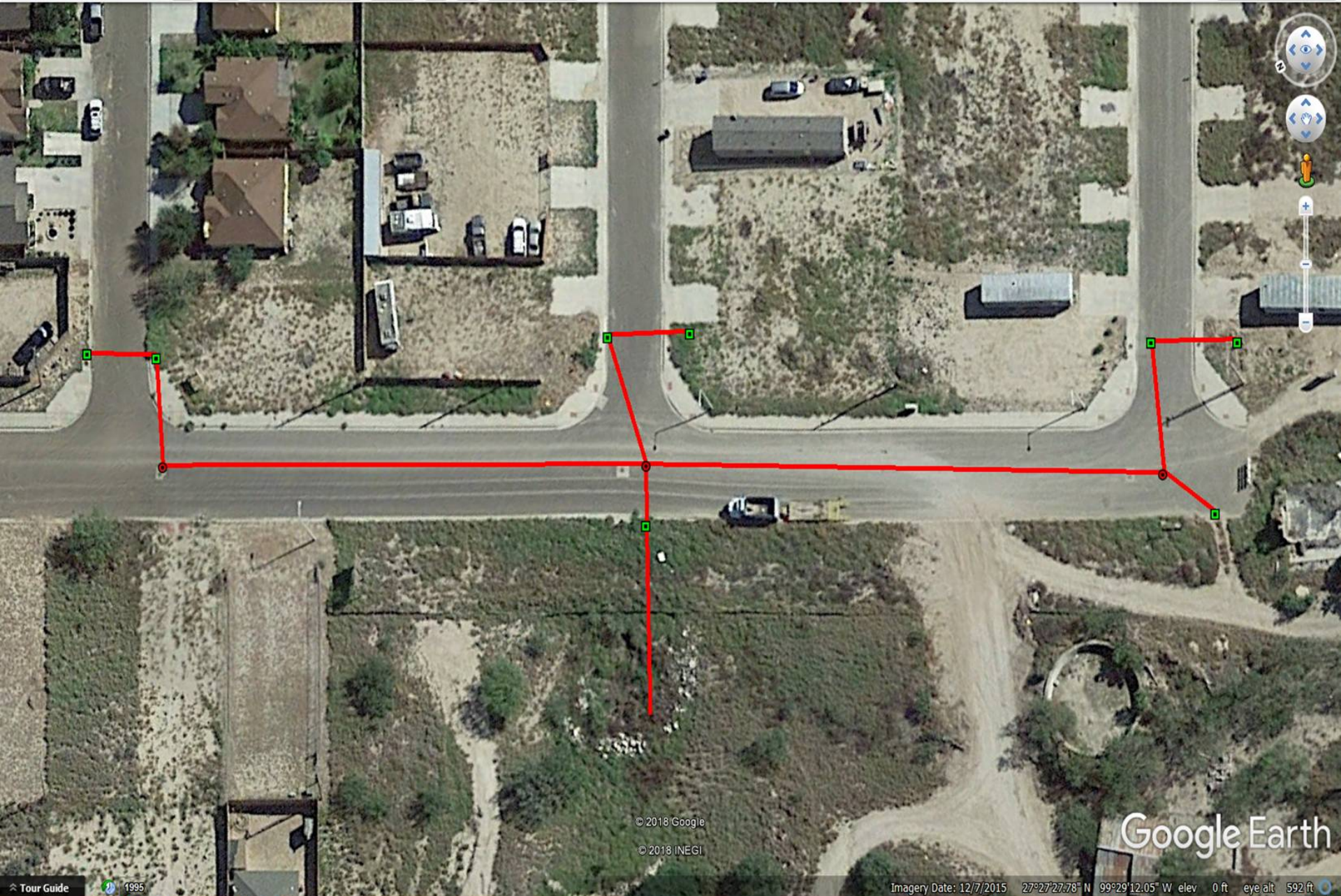


05/16/2006



STORM RAIDERS

Featuring
Inspector McCloud



© 2018 Google
© 2018 INEGI

Google Earth





04/10/2006

POWER ON OFF

MUD MASTER

CIRCUIT BREAKERS

LEFT MAIN RIGHT
MOTOR POWER MOTOR

CALIBRATE UP L
DOWN T

JOYSTICK

STEERABLE

Panasonic SUPER DRIVE

44PI 8780C 8-HEAD 100 SFR



TACAP



PRODATA 2000

POWER CONTROL UNIT

04/01/2008

WINCH/REEL CONTROLLER

CAUTION

NIGHT OWL

CAMERA

AMPS

SPEED

WINCH

REEL

JOYSTICK CONTROLLER


UP

DOWN

LEFT

RIGHT



An endoscopic view of the colon showing a large, dark, polypoid lesion. A snare is positioned around the lesion, and a small amount of yellowish fluid is visible at the tip of the snare. The surrounding mucosal folds are visible.

CLOTILDE/PIERCE GOTHENBURG
04/26/12 10:10
130.6 FT.

08/05/2013
04/26/2012

We have to get to the shop





JUN 25 2007



WALSH

PONTIAC GRAND AM

V8 OVERHEAD CAM

INTERNATIONAL

17 9:47 AM



08/21/2017



08/21/2017



MADE IN
SPECIALTY
San

MAY 9 2007

62 8159



JUN 25 2007

NOT
RESPONSIBLE FOR FIRE
ACCIDENT, THEFT
OR VANDALISM
10/1/89
The MANAGER





ED. OIL

LIETHANE
GRADE
REFILLER

ME...
PER...
DE...
FLAMMABLE LIQUID

GENIE
SAFE...
500...

energ

17 9:49 AM







17 9:48 AM

Do's and Don'ts

- Absorbents
- Antifreeze
- Batteries
- Floor Cleaning Washwater
- Oil and Oil Filters





2008/10/8



Absorbents

- Use drip pans
- Reusable pads
- Nearby
- Use minimum amounts
- Microbes
- Do Not:
- Dispose down drain
- Dispose on ground
- Mix non-hazardous material with hazardous material



Antifreeze

- Use dedicated equipment
- Recycle on site or with a service
- Containers closed
- Protected from the elements
- Do not:
- Mix with other wastes
- Mix flush chemicals with used antifreeze
- Pour on ground, storm drain, septic tank, or dry well





TOTECO
LE 15

Durastart
L1270
60Ah 12V

DieHard

NO
C

Batteries

- Storm upright, check often for leaks
- Alkaline mats or containment boxes
- Recycle used batteries ASAP
- Acid spill kit close
- Don't:
- Place in garbage
- Dispose in landfill
- Stack
- Store outside unprotected from weather



Floor Cleaning Wash water

- Good housekeeping
- Pressure washer – less water
- Know where drains go
- Use oil/water separator
- Do not:
- Allow floor cleaning water to enter septic tank, storm drains, ditches, stream, lake, dry well or ground



Used Oils

- Keep all containers closed and labeled
- Store out of the elements
- Recycle used oil
- Drain oil filters
- Secondary containment
- Do not:
- Mix with other chemicals
- Pour down drains
- Drain into street, drainage ditch, storm drain, stream, or ground





3 important words in waste management

- Reduce:
- If a particular waste is a nuisance or hazard, reduce or eliminate if possible
- It saves on material costs
- Avoids long-term liability concerns
- Creates a healthier and safer environment



3 important words in waste management

- Reuse:
- Extends the use of the product
- Using used thinner in first step in cleaning and fresh thinner in final cleaning step
- Adds time before treating as a waste



3 important words in waste management

- Recycle:
- Separate materials
- Keep out of the elements
- Keep low quantities
- Cash back



This comes with a price

